

City of Tuscola

Community Building Audio/Visual System

Rental of the house audio/visual system in the Tuscola Community Building requires responsibility for all components of the system, including these detached components:

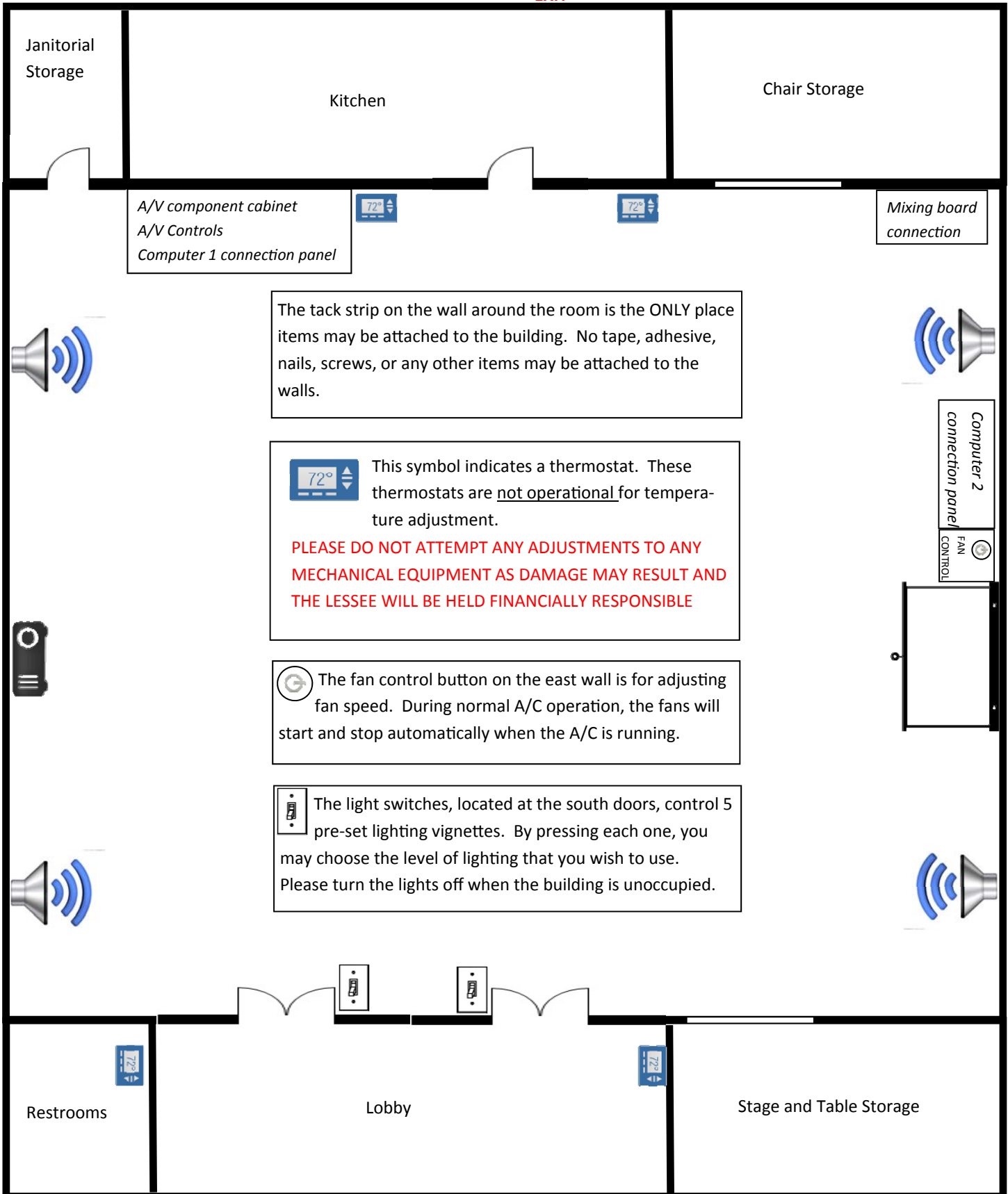


1. Two lapel microphones with wireless packs (*with AA type batteries*)
2. One headset microphone (*which plugs into the same wireless pack as the lapel mics*)
3. Two wireless microphones (*with AA type batteries*)
4. One Denon remote control (for Blu-ray player) (*with AAA type batteries*)
5. Two system keys: silver key goes to the Furman main power switch and the black key goes to the audio visual wall mounted cabinet

Tuscola Community Building Systems





EXIT




EXIT

The tack strip on the wall around the room is the **ONLY** place items may be attached to the building. No tape, adhesive, nails, screws, or any other items may be attached to the walls.

 This symbol indicates a thermostat. These thermostats are not operational for temperature adjustment.
PLEASE DO NOT ATTEMPT ANY ADJUSTMENTS TO ANY MECHANICAL EQUIPMENT AS DAMAGE MAY RESULT AND THE LESSEE WILL BE HELD FINANCIALLY RESPONSIBLE

 The fan control button on the east wall is for adjusting fan speed. During normal A/C operation, the fans will start and stop automatically when the A/C is running.

 The light switches, located at the south doors, control 5 pre-set lighting vignettes. By pressing each one, you may choose the level of lighting that you wish to use. Please turn the lights off when the building is unoccupied.

EXIT

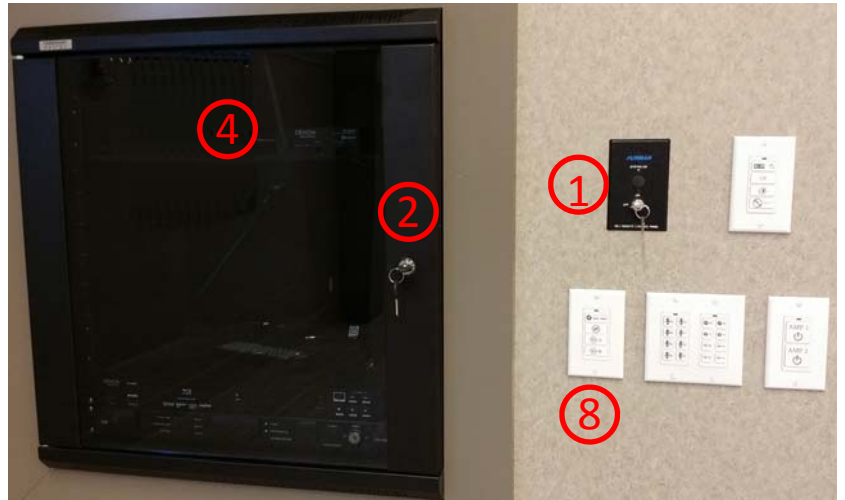
EXIT

City of Tuscola

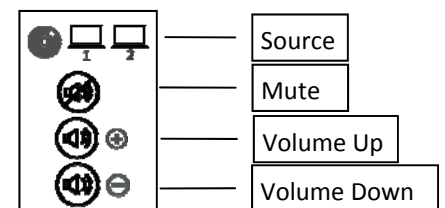
Community Building Audio/Visual System

OPERATION OF THE SYSTEM: *Please be patient and allow a few moments after pressing control buttons for the system to respond, there is an intentional delay to allow the components to power up or down appropriately*

1. Insert the metal key into the black Furman power on/off switch and turn the key to the on position. **Wait until the green indicator light stops blinking** and stays on steady before proceeding.
2. Insert the key with a black plastic jacket into the cabinet lock and open.
3. To use one or more microphones for speaking: Turn on the power to the microphone(s) you want to use and the system will automatically detect the microphone within a few moments and the voice will begin to sound through the house sound system.
4. To play music via Bluetooth connection: Press and hold the pair button on the small Denon component in the top part of the cabinet while your phone or device discovers the signal. Once paired, music played on your device will play through the house sound system.
5. To play a music CD: Insert the CD into the Blu-ray player tray and close the tray. Music will automatically play through the house sound system.
6. To play music or photo slideshow from a USB memory device: insert the device into the USB port on the Blu-ray player. Press the power button on the projector panel to deploy the projector screen. Using the Denon remote, navigate within the on-screen media center to the file structure to your music or image files.
7. To play a movie from a disc: Insert the DVD or Blu-ray disc into the Blu-ray player tray and close the tray. The projector screen will automatically drop down from the east wall ceiling (within a few moments) and the movie will begin automatically. Use the Denon remote to navigate the on-screen menus.
8. Main System Controls: Normally, only the main system controls, located closest to the component cabinet will be used. This panel controls the volume of the entire system. The source is set to the Blu-ray player by default and should not be changed when using the components inside the cabinet or Bluetooth device.
9. To connect a computer: There are two computer input source panels in the building:
 1. Computer source 1 is located under the component cabinet on the north wall
 2. Computer source 2 is located on the east wall of the building.Plug in your computer to either source panel using either a VGA or HDMI cable. Press the source button on the main system control panel once if plugged into the computer source 1 panel on the north wall and twice if plugged into the computer source 2 panel on the east wall. Turn on the power button on the projector panel to deploy the projector screen.
10. Power Down: the system powers down, turns off all components and retracts the projector screen automatically when the Furman power key is switched off. The shutdown process takes a few minutes, so do not restart the system until the green light has stopped blinking.



8 Main System Control Panel



City of Tuscola

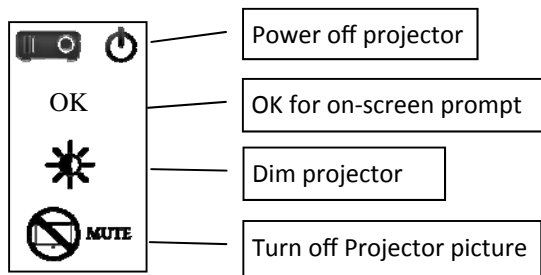
Community Building Audio/Visual System

OTHER FUNCTIONS & OPTIONS:

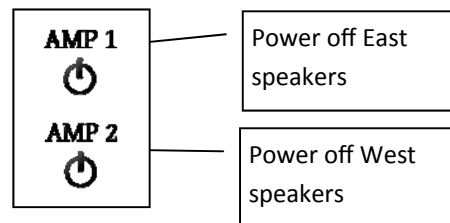
- Projector Control Panel:** The white panel immediately right of the Furman main power switch is the projector control panel used only if needed to specifically control the projector outside of the use of the main automatic controls. The panel contains buttons for power of the projector, OK button for responding to on-screen prompts, a brightness button to dim the projector bulb and a mute button to turn off the projector bulb without turning off power to the projector.
- Sound Amplifier panel:** Two amplifiers are used in the sound system to control the four speakers. AMP 1 controls the two speakers on the east wall and AMP 2 controls the two speakers on the west wall. Pressing either button on the sound amplifier panel will power down the corresponding speakers, leaving the other speakers as the only sound source.
- Using multiple playback sources simultaneously:** The system is designed such that you can play multiple sources at the same time. For example, you could play music from a CD at the same time as talking through a microphone. When using multiple playback sources, the individual source volume control panel is used to increase or decrease volume to the individual devices.



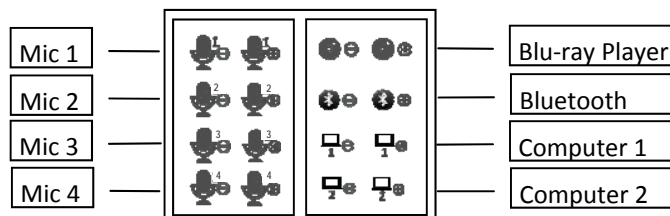
1 Projector Panel



2 Sound Amplifier Panel



3 Multiple Source Volume Control Panel



To reset the system to the default settings:

- 1. Turn off the main power key and wait for the green light to stop blinking (indicating shutdown is complete)**
- 2. Then turn the power key back on and wait for the green light to stop blinking (indicating start-up is complete)**